

GREAT BAY DISCOVERY CENTER PRESENTS WINTER BAYVENTURES 2010

CHILDREN'S WINTER PROGRAM SCHEDULE

JANUARY 9 (SATURDAY) A TASTE OF WINTER

How did Native Americans survive the winter? What did they eat? How did they dress? What did they live in and what did they do during the long winter months? We will spend the morning at our Abenaki campsite making food and crafts like the "People of the Dawn" once did.

Ages 7-11. 9:45 am—2 pm

Bring a lunch and dress appropriately for extended outdoor play!

**\$12 GBS members,
\$15 non-members.**

FEBRUARY 13 (SATURDAY) WINTER WILDLIFE TRACKING AND GEOCACHING FOR FAMILIES

Join Discovery Center naturalists as we look for signs of wildlife in winter and introduce you to the Geocaching craze. If you have never been before, Geocaching is a hide and seek challenge for Global Positioning System (GPS) users. This adventure game has appeal to all ages and abilities. It uses coordinates and satellite signals to help you pinpoint the location of the treasure! The class will gather at the Great Bay Wildlife Management Area at Crommet Creek in Durham and hunt for the Geocache called "Beavers are Us" on snowshoes. Cocoa provided after walk.

9:45 am– 12:00 pm

\$10/family Space limited!

Snowshoes available for children on first come, first serve basis. Location directions provided when registering.

FEBRUARY 23, 24, 25, OR 26 (NO PROGRAM MONDAY) ANIMAL AUTOGRAPHS

Join us as we look for animals and their "autographs" in different habitats around the Discovery Center...on snowshoes! Over the last couple of years we have identified fisher tracks in the woods, otter tracks on the salt marsh and we even saw a bald eagle fly by while having our snack. Take part in winter activities and games and make a craft to take home. No snow? No fear! Program will run snow or no!!

Ages 7-11. 9:45am—2pm

Bring a lunch and dress appropriately for extended outdoor play!

**\$12 GBS members,
\$15 non-members.**

MARCH 5TH TO 6TH (FRI-SAT) WAKE UP IN A WIGWAM!

Does a museum really come alive at night? Find out while discovering our new exhibits in the Hugh Gregg Coastal Conservation Center, showing Native American and Colonial life. We will watch a special movie on our big screen and play games until we really find out how the night comes alive – when we grab our sleeping bags and fleece and spend the rest of the night outside in our birch bark covered wigwam. Wake up in the morning to a hot breakfast outdoors!

Ages 10-13. 4:30pm - 9am.

Dinner and breakfast provided.

**\$30 GBS members,
\$40 non-members.**

Please call (603) 778-0015 to pre-register. Space is limited to 12 participants per program. Checks may be made out to Great Bay Stewards and sent to the address below (attn. Bayventures).

Great Bay Discovery Center/Bayventures
89 Depot Road
Greenland, NH 03840





Local Business Supports the Great Bay Discovery Center

Many thanks to Exeter Lumber, located on Portsmouth Avenue in Exeter, for their donation of lumber and supplies to construct a permanent canopy at the waterfront to be used by schools, kayak and summer programs at the Great Bay Discovery Center.

SAVE THE DATE!

Great Bay Discovery Center Presents:

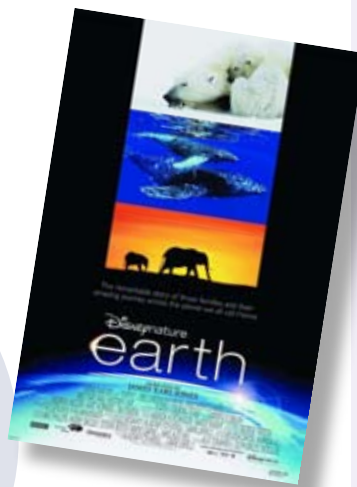
Educator Training: April 14th, 9 am – 4 pm

Exhibit Room Training: April 16th, 10 am – noon

Sweet Trail Celebration – Durham

Saturday, April 24th

Enjoy a day full of activities celebrating the new sweet trail in Durham/Newmarket!



DISCOVERY CENTER BROWN BAG LUNCH SERIES

Wednesdays at noon.
Bring a lunch, drinks and
dessert will be provided

JANUARY 20TH

(snow date 22nd)

UNH Professor Pete Pekins:

Winter Survival of
White-tailed Deer

FEBRUARY 17TH

(snow date 19th)

UNH Professor Jeff Bolster:

Fish, Trees, Sheep and
Factories: *Environmental
Change in New Hampshire*

MARCH 17TH

Cliff Sinnott, Rockingham

Planning Commission:
Sustainable Development

MARCH 26TH

► **Movie Night at 7pm**

The movie "EARTH" –
"A super-duper deluxe
nature documentary,"
this film was made by the
BBC team that created the
series, *Planet Earth*

Great Bay Discovery Center
89 Depot Road
Greenland, NH 03840
603-778-0015